



Digital communications, coupled with TOA audio quality provides an outstanding conference system that can be adapted to fit any size room.

# DIGITAL CONFERENCE SYSTEM

TS-D1000 Series

Professional and Passionate. Conference system amplifies the power and influence of your speech.

Solid Construction

Minimal Footprint

PRIORITY

Excellent Coherence and Intelligibility

## Your message reaches the audience perfectly

### High Quality Audio No Missing Words

Carefully designed audio processing and hardware enhance audio performances. High quality audio assures that your message get through to the audience.

Auto gain control (AGC) function provides uniform sound volume by adjusting the gain based on how loud or soft the speaker's voice is.

### No Interruption

Advanced feedback suppressor (FBS) minimizes acoustic feedback.



## Facilitator-supporting Features

### Chairman's Unit Priority Function

- Chairman Unit has priority override control.
- Smooth operation of the conference is assured by a Chairman Unit's priority function.

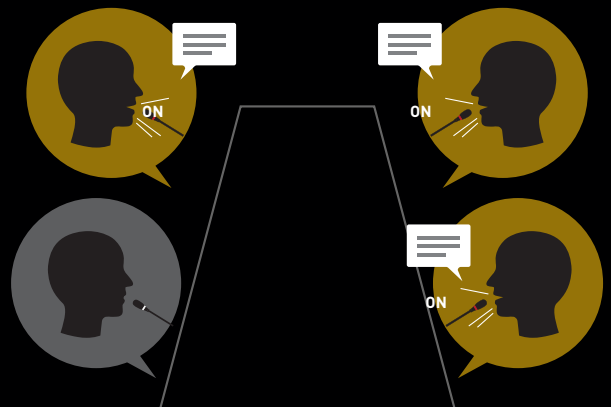
### Setting for Number of Open Microphones

- The number of delegates who speak simultaneously can be limited to make communication go smoothly.
- Up to eight Delegate Units for simultaneous operation is allowed and if one or two Chairman Units are included, they may speak simultaneously.

## Participant-supporting Feature

### Voice Activation Mode

Start talking instead of pressing the button. Microphone can be activated in response to a person's voice.



## Administrator-supporting Feature

### Easy Maintenance

A Shielded CAT5e cable carries signals between conference units or between the Master Control Unit and a conference unit.



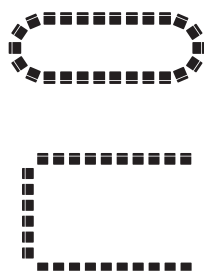
## Designed to run effective meetings



Long microphone option to make a room for your laptop or documents.



Intelligible conversations in conference or board rooms for up to **246** participants.



# Master Control Unit | Key Functions



Built-in volume control for monitor speaker.

## Operation Mode

**STANDARD** : Optimized for a meeting where the chairman assigns who will talk the next.

**OVERRIDE** : Optimized for a meeting where the participants talk in order.

**VOICE ACTIVATION** : Optimized for an open discussion.

**CHAIRMAN ONLY** : Optimized for a presentation style meeting. The presenter will reach every participant clearly thanks to a built-in speaker on each unit.

## Energy Saving Mode

Delegate unit automatically switched off after 30 seconds of inactivity.

TS-D1000-MU



## Built-in Audio Recording

Meetings can be recorded in mp3 format on USB drive or internal memory\*.

\*Internal recording up to 18 hours at 128 kbps.

A recessed USB port to prevent anyone from accidentally touching the USB drive and breaking it.



## Web Browser Application

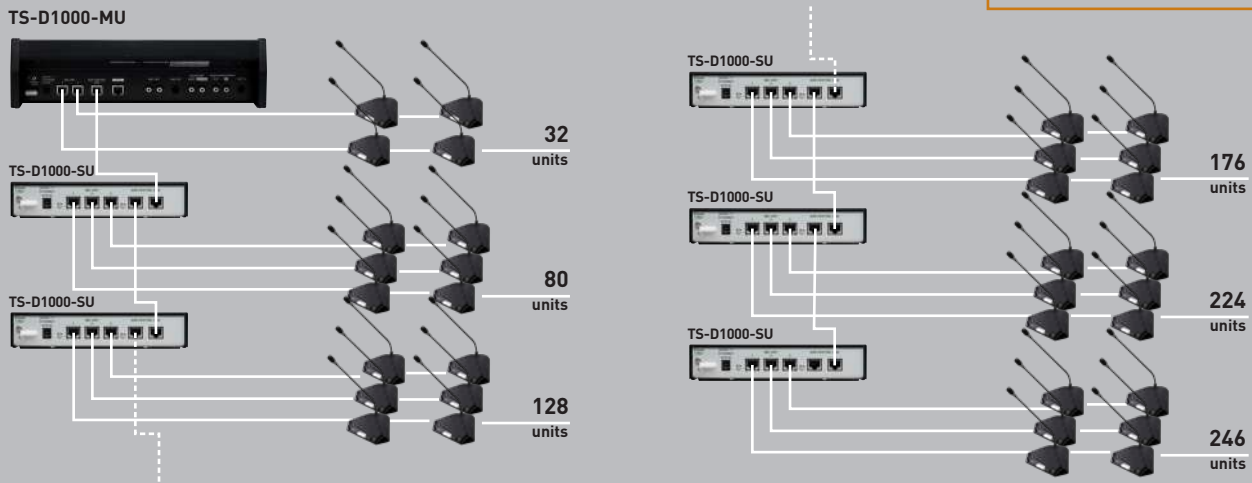
Built-in web browser application is available. Advanced settings can be made from a PC or tablet.



# System Configuration / Components

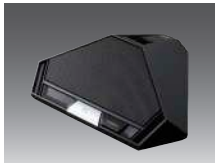
## TS-D1000 Series

**Max 246 Conference units**



### TS-D1000-MU Master Control Unit

- Supports up to 32 conference units
- Mic In, Line Out, Rec Out, Headphone monitor out, EQ In/Out
- Function setting : Number of open microphones, Auto mic-off function, Microphone priority selector
- Rack-mountable with optional MB-TS920 bracket



### TS-D1000-CU Chairman Unit

- Chairman unit for basic discussion
- Priority button
- 0.4W monitor speaker
- 2 headphone jacks with individual volume control
- PoE powered



### TS-D1000-DU Delegate Unit

- Delegate unit for basic discussion
- 0.4W monitor speaker
- 2 headphone jacks with individual volume control
- PoE powered



### TS-D1000-M2 Microphone [Long]

- Gooseneck microphone
- Unidirectional electret condenser microphone
- LED shows microphone status
- XLR-3-12C connector
- Sensitivity: -37 dB (1 kHz, 0 dB = 1 V / PA)
- Frequency response: 100 Hz - 13 kHz
- Length: 668 mm (2.19 ft)



### TS-D1000-SU Sub Control Unit

- Controls up to 48 Conference Units
- Up to 5 Sub Control Units connectable to the Master Control Unit with the supplied LAN cable.



### TS-D1000-EX Extension Unit

- Provides up to 50m extension over Shielded CAT5e



### MB-TS920 Rack Mounting Bracket

- For use with TS-D1000-MU