



TKDN

Z-FV2148W-AS

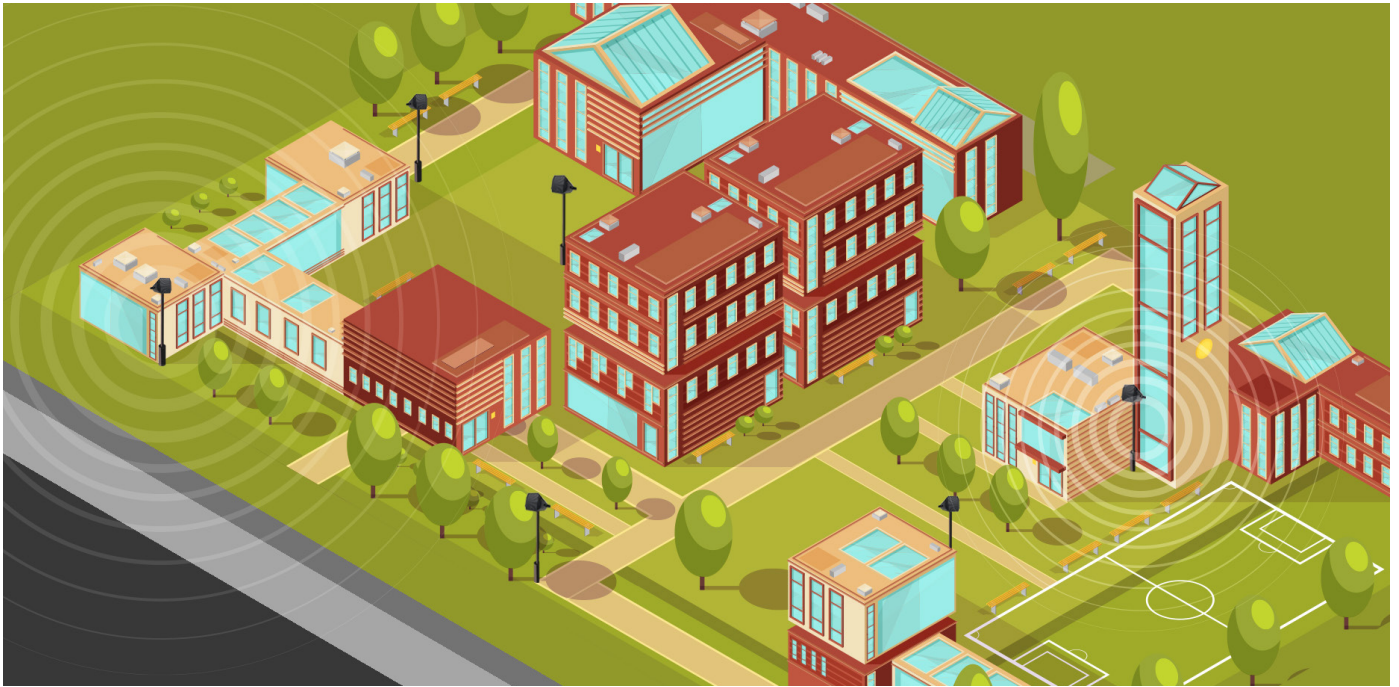
Wall-Mount
Voice Evacuation System



your all in one compact voice evacuation system

WHY WE NEED EVACUATION SYSTEM?

Know What to Do When Every Second Counts'



In today's unpredictable world, emergencies can strike without warning, necessitating immediate action to ensure the safety of individuals within a facility. Fires, natural disasters, and unforeseen hazards can escalate rapidly, posing grave risks to occupants and property alike. That's where our Voice Evacuation System steps in.

In the event of an emergency, every second is critical. Our Voice Evacuation System provides a lifeline, offering clear and concise instructions that guide occupants to safety with efficiency and precision.

Imagine a fire outbreak. As smoke fills the air and chaos ensues, our system's clear, intelligible voice messages cut through the confusion, directing occupants to the nearest exits and safe assembly points.

During natural disasters like earthquakes or severe storms, where communication channels may be compromised, our system ensures that crucial evacuation directives reach every corner of the facility, even amidst the chaos.

Moreover, in scenarios involving hazardous materials or other threats, our Voice Evacuation System can relay tailored instructions, ensuring occupants take the appropriate actions to safeguard themselves and others.

With our new product, Wall-Mount Voice Evacuation System Z-FV2148W-AS, you're not just prepared for emergencies, you're empowered to navigate them with confidence, knowing that every voice message is a lifeline guiding you to safety.

Z-FV2148W-AS

Wall-Mount Voice Evacuation System

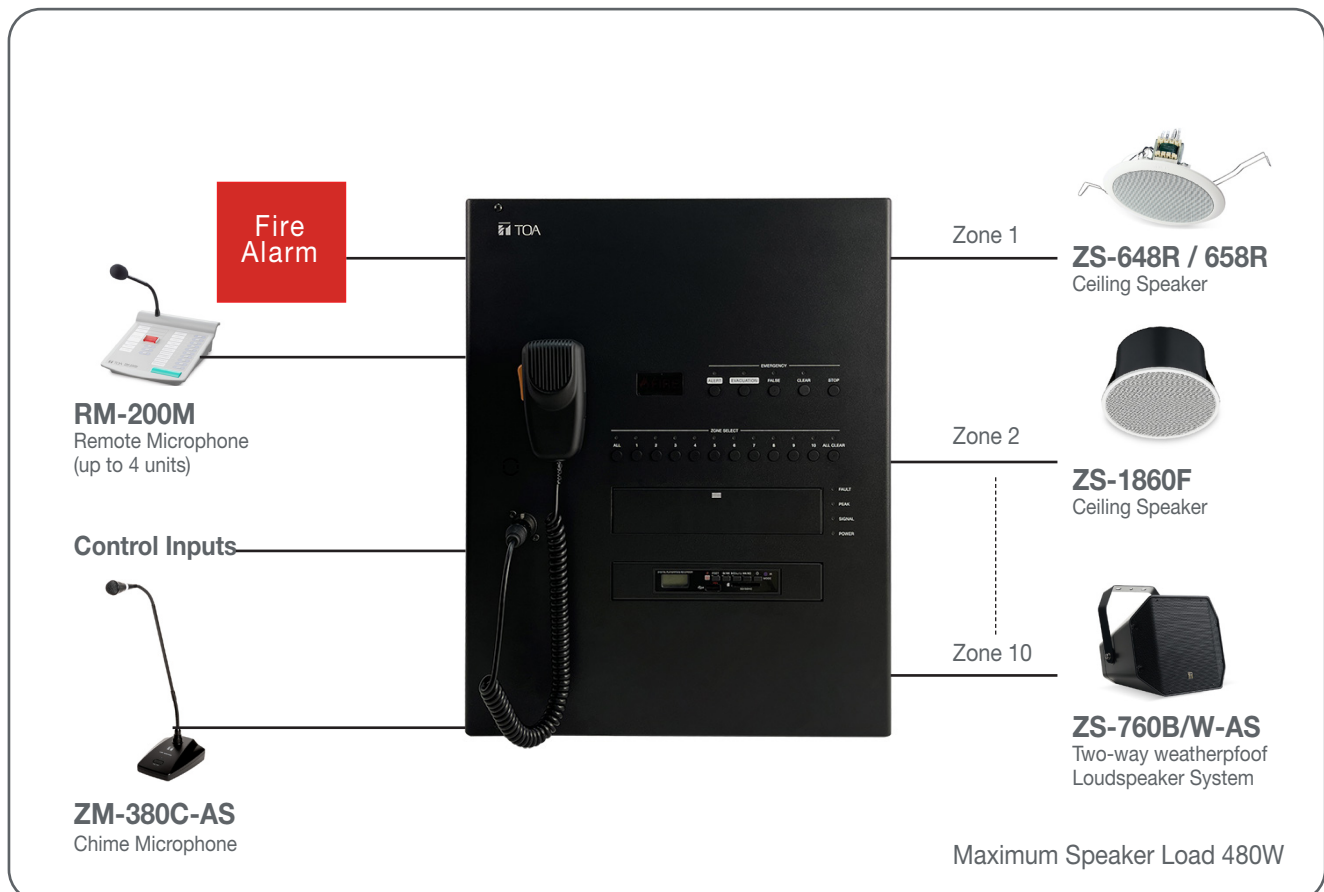


Z-FV2148W-AS is a compact and lightweight Voice Evacuation wall mount system. It is designed for both general and emergency purpose broadcast. The wall mount system is comprised of the 4 pre-recorded Voice Evacuation messages, 480W digital power amplifier modules, speaker zone selector, and can connect up to 4 remote microphones. The Z-FV2148W-AS can link with fire alarm panel. Emergency messages are automatically broadcast when the fire alarm is activated.

System Features

- Wall Mount Voice Evacuation System
- Compact all in one
- Fireman Microphone
- 10 speaker zones, 480W rated output
- Build-in 4-emergency messages
- Link with fire alarm panel
- Connect up to 4 x RM-200M remote microphones
- MP3 Player

System Application



Product Specifications



Z-FV2148W-AS	
Power Source	100 - 240 V AC, 50/60 Hz, M4 Screw Terminal
Power Consumption	99 W (EN 62368-1) 530W (Rated Output)
Rated Output	480W
Input	Front Microphone : -60dB*, 2.2kΩ, unbalanced, XLR connector Input 1 : -60dB*/ -20dB* (selectable), 2.2kΩ, balanced, screw terminal Phone jack priority (if connected to phone jack, voice change automatically) Input 2 : -20dB*, 10kΩ, balanced, screw terminal MP3: LED Display, Support USB, SD/MMC Card (up to 32GB), Bluetooth, Radio FM
Remote Microphone	Usable Remote Microphone : RM-200M Max 4 unit, RJ45 Maximum Cable Distance: Total 800M
Output	Speaker Output : Screw Terminal Speaker Selector : 10 Zones, high impedance (100V line) individual selector, group
S/N Ratio	Over 60dB
Total Harmonic Distortion	Under 1% at 1kHz, 1/3 rated power
Frequency Response	50Hz - 20000Hz
Tone Control	Bass : ± 10dB at 100Hz ; Treble : ± 10dB at 10kHz
Emergency Announcement	Alert, Evacuation, False, Clear (repeated continuously / one time, selectable)
Built-in Chime	2 Chimes
Control Input	FA IN : No-voltage make contact input, open voltage: 24V DC, short-circuit current: under 5mA, screw terminal CTRL IN 1-6 : No-voltage make contact input, open voltage: 24V DC, short-circuit current: under 5mA, screw terminal (assignable)
Control Output	FA OUT : Relay contact output, rated voltage: 24V DC, screw terminal CTRL OUT 1 - 2 : Relay contact output, rated voltage: 24V DC, screw terminal (assignable)
Indicator	Power, Signal, Peak, Fault, Each of Zone, All Zone, Alert, Evacuation, False, Clear
Operating Temperature	0°C to + 40°C
Operating Humidity	Under 90% RH (no condensation)
Ventilation	Fan Cooling
Finish	Steel Plate, Black , Paint
Dimensions	370 (W) x 456(H) x 132 (D) mm
Weight	9.2kg
Accessories	Front Microphone....1, Paper Pattern....1

* 0 dB = 1 V



Scan for more info