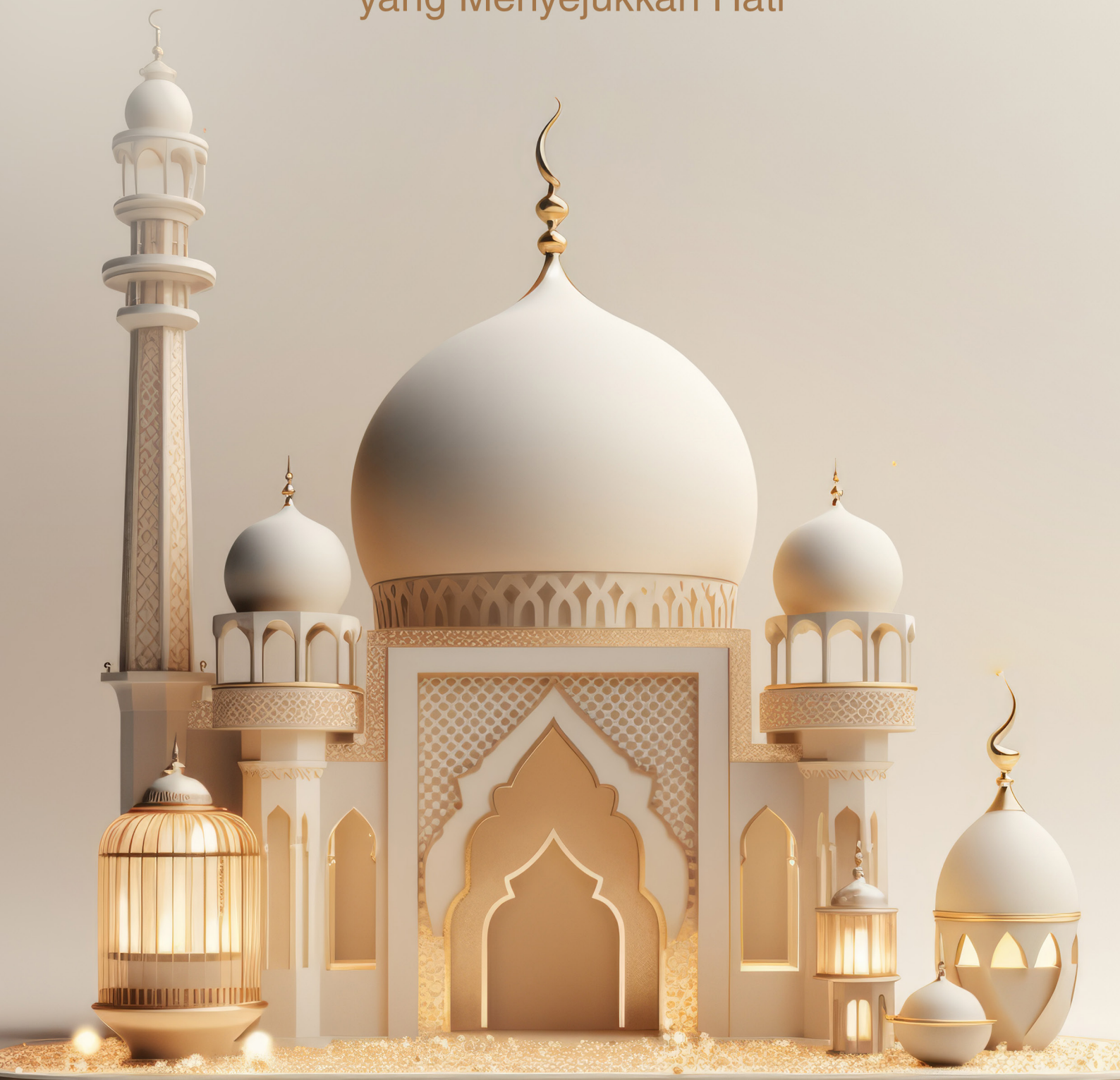




Sistem Tata Suara Masjid

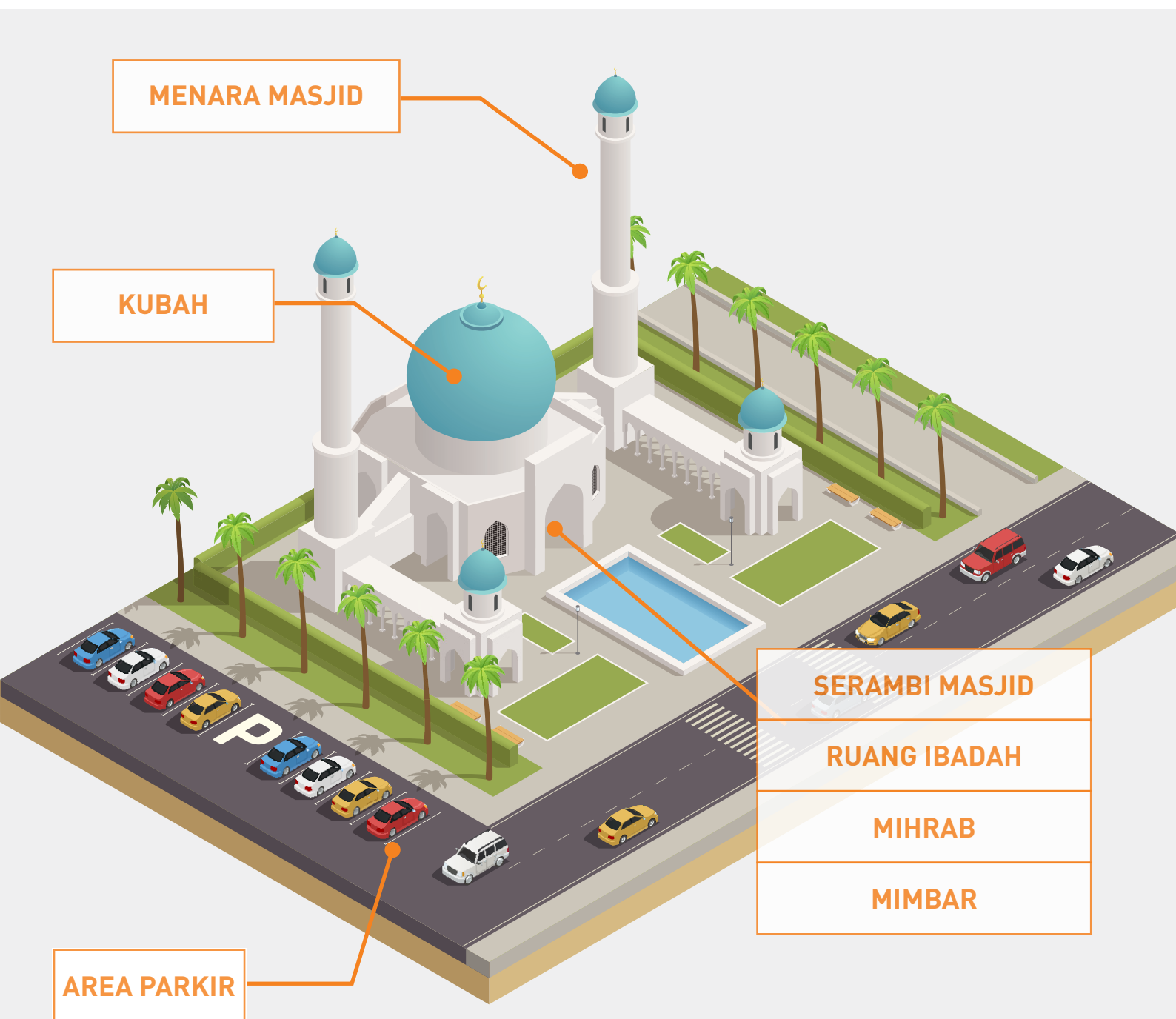
Harmoni Suara untuk Pengalaman Beribadah
yang Menyejukkan Hati



Harmoni Suara Menyejukkan Hati

Tingkatkan pengalaman peribadahan Anda dengan solusi audio terbaik dari TOA Indonesia yang dirancang khusus untuk penggunaan pada Masjid maupun Musala.

Sistem tata suara dan komunikasi TOA Indonesia memastikan hasil audio yang jernih untuk pelafalan Al-Quran hingga panggilan adzan dapat terdengar dengan jelas oleh tiap jemaah, memungkinkan keselarasan harmoni aktivitas peribadahan yang khushyuk menyejukkan hati.



Sistem tata suara dan komunikasi TOA Indonesia untuk Masjid atau Musala mampu memproyeksikan suara berkualitas tinggi yang jelas dan jernih tanpa feedback, serta tersedia dalam berbagai varian dengan kemudahan pemasangan dan penggunaan sesuai dengan kebutuhan Anda.

REKOMENDASI PRODUK

Mixer Amplifier



Digital Mixer Amplifier ZA-3200D-AS 1 Series

- Tersedia dalam 120W, 240W, and 480W untuk berbagai aplikasi penggunaan
- Daya input universal : 100 - 240V
- Memiliki fitur MP3 Player, FM Radio, Bluetooth, Selektor Pemilihan Zona, Fungsi Echo
- Input hingga 4 unit mikrofon dan 2 AUX
- Input RJ-45 untuk Chime Microphone (ZM-380C-AS)
- Pemutar USB/SD/BT (termasuk fungsi recording)
- Terdapat selektor impedansi untuk penggunaan impedansi rendah atau tinggi

Model	ZA-3212D-AS 1	ZA-3224D-AS 1	ZA-3248D-AS 1
Power Source	100 - 240V AC, 50/60Hz	100 - 240V AC, 50/60Hz or 24V DC	
Power Consumption (EN60065)	44W	62W	99W
	(AC operation at 1/8 maximum output without clip)		
Rated Output	120W	240W	480W
Input	MIC 1: 1mV (-60dB*), 600Ω, Balanced, Phone Jack, selectable to RJ45 with echo function MIC 2 - 3: 1mV (-60dB*), 600Ω, Balanced, phone jack MIC 4: 1mV (-60dB*), 600Ω, Balanced, phone jack, selectable to AUX 1 AUX 1: 100mV(-20dB*), 10kΩ, Unbalanced, RCA pin jack, selectable to MIC 4 AUX 2: 100mV(-20dB*), 10kΩ, Unbalanced, RCA pin jack		
Output	Speaker Out	Speaker output in screw type terminal	
	Direct Line (Selectable)	83Ω(100V) or 4Ω	42Ω(100V) or 4Ω
	Rec Out	0dB*, 600Ω, Unbalanced, RCA pin jack	
S/N Ratio	Over 60dB		
Frequency Response	50Hz - 20kHz		
Tone Control	Bass: ±10dB at 100Hz/ Treble: ±10dB at 10kHz		
Finish	Panel: ABS resin, black/ Case: Steel plate, black		
Dimensions	420(W) x 100.9(H) x 357 (D)mm		
Weight	4.6kg	5.1kg	5.4kg

*0dB = 1V



Digital Power Amplifier ZP-3248D-AS 1 Series



Model	ZP-3248D-AS 1
Power Source	100 - 240V AC, 50/60Hz or 24V DC
Power Consumption (EN60065)	99W (AC operation at 1/8 maximum output without clip)
Rated Output	480W
Input	Line In: 0dB*, 10kΩ, Balanced, screw terminal 100V Line In: 40dB*, 30kΩ, Unbalanced, screw terminal
Output Speaker Out	Speaker output in screw type terminal
Direct Line (Selectable)	21Ω(100V) or 4Ω
Loop Out	0dB*, 10kΩ, balanced, screw terminal
S/N Ratio	Over 70dB
Frequency Response	50Hz - 20kHz
Tone Control	Bass: ±10dB at 100Hz/ Treble: ±10dB at 10kHz
Finish	Panel: ABS resin, black/ Case: Steel plate, black
Dimensions	420(W) x 100.9(H) x 351.3 (D)mm
Weight	5,2kg

*0dB = 1V

Multichannel Power Amplifier DA-1000F-AS



- **Digital Power Amplifier untuk 4 channel**
- Berdaya tinggi dengan total output 4000W (4Ω) dalam kabinet 2U
- Terdapat tipe koneksi yang dapat dipilih – Mode Bridge / Mode Paralel / Mode Stereo
- Semua channel dapat dihubungkan dalam konfigurasi 2 / 3 channel

DA-1250D-AS



- **Digital Power Amplifier untuk 2 channel**
- Berdaya tinggi dengan total output 2500W (4Ω) dalam kabinet 2U
- Terdapat tipe koneksi yang dapat dipilih – Mode Bridge / Mode Paralel / Mode Stereo
- Semua channel dapat dihubungkan dalam 1 channel pengoperasian

Model	DA-1000F-AS	DA-1250D-AS
Power Source	100 - 240V AC, 50/60Hz	
Power Consumption	2000W ¹	1100W ¹
Input	CH 1-4: 20kΩ (balanced) /10kΩ (unbalanced), 0.775/ 1.0V/ 32dB ² , XLR-F connector	CH 1-2: 20kΩ (balanced) /10kΩ (unbalanced), 0.775/ 1.0V/ 32dB ² , XLR-F connector
Output	Link CH 1-4: XLR-M connector SPEAKER 1-4: 4 channels: 650Wx4(8Ω) ³ , 1000Wx4(4Ω) ³ 2 channels(BRIDGE): 2000W x 2(8Ω) ³ NL4 SPEAKON connector	Link CH 1-2: XLR-M connector SPEAKER 1-2: 2 channels: 700Wx2(8Ω) ⁴ , 1250Wx2(4Ω) ³ 1 channel(BRIDGE): 2500W x1(8Ω) ³ NL4 SPEAKON connector
S/N Ratio	≥100dB	
Frequency Response	20Hz - 20kHz (+/-3dB)	
Finish	Case: Plated steel sheet, black	
Dimensions	483(W) x 89(H) x 461(D)mm	483(W) x 89(H) x 305(D)mm
Weight	9.2kg	6.1kg

¹ 2/3 rated, 8Ω/CH | ² 0dB = 1V | ³ the power is tested under condition of 20ms burst 1kHz sin wave and 1%THD

⁴ the power is tested under condition of 40ms burst 1kHz sin wave and 1%THD

Mixer Pre Amplifier Z-MX9200-AS 1



- Ideal untuk penggunaan pada ruang serbaguna, pelatihan, dan rumah ibadah skala kecil
- Tersedia hingga 9 input, dengan 4 input menggunakan daya phantom
- Pengaturan dapat dilakukan melalui perangkat layer sentuh atau handphone Android yang terhubung menggunakan Bluetooth

Model	Z-MX9200-AS 1
Power Source	AC 220 - 240 V, 14 W
Audio Input	Input CH 1 with Phantom option 19 V DC: - CHIME MIC: Balanced, Selectable sensitivity -55 dB (1.8 mV) / -30 dB (30 mV), 2.2 k Ω , rated 1 kHz, RJ45 connector - MIC: Balanced, Selectable sensitivity -55 dB (1.8 mV)/ -30 dB (30 mV), 2.2 k Ω , rated 1 kHz, Phone jack connector Input CH 2-4 with Phantom option 19 V DC: - Balanced, Sensitivity -55 dB (1.8 mV), 2.2 k Ω , rated 1 kHz, Phone jack connector Selectable Input CH 5 with options: - MIC: Balanced, Sensitivity -55 dB (1.8 mV), 2.2 k Ω , rated 1 kHz, Phone jack connector - AUX: Unbalanced, Sensitivity 0 dB, 10 k Ω , rated 1 kHz, RCA jack connector Selectable Sensitivity Input CH 6-8, Removable terminal 3 pins with sensitivity options: - LINE: Balanced, Sensitivity 0 dB, 2.2 k Ω , rated 1 kHz - MIC: Balanced, Sensitivity -55 dB (1.8 mV), 2.2 k Ω , rated 1 kHz Selectable Sensitivity Input CH 9, Removable terminal 3 pins with sensitivity options: - MIC: Balanced, Sensitivity -55 dB (1.8 mV), 2.2 k Ω , rated 1 kHz - STREAMING: Unbalanced, Sensitivity 0 dB, 10 k Ω , rated 1 kHz
Audio Output	Audio OUT A & B, Balanced, Removable terminal 3 pins Optional output level: 0 dB / -10 dB (300 mV) / -20 dB (100 mv), 600 Ω , rated 1 kHz
Control Output	9 Shortcut switch IN, 2 Shortcut switch OUT, 1 Shortcut switch VOLUME, 1 Shortcut switch Tone Control, 1 Shortcut switch Input Selection, 1 Navigation switch (Right, Left, Push)
Frequency Response	30 Hz ~ 20 kHz, \pm 3 dB
Finish	Front Panel: Aluminum Hair Line, Painting Black / Case: Steel Plate, Painting Black
Dimensions	420 x 59 x 339.7mm
Weight	3.3kg

Column Speaker

Metal Column Speaker

ZS-107-AS

ZS-207-AS



Model	ZS-107-AS	ZS-207-AS
Rated Input	10W (Max. 15W)	20W (Max. 30W)
Rated Impedance	100V line : Hot 1k Ω - black, Com - white	100V line : Hot 500 Ω - black, Com - white
Sound Pressure Level	93dB (1w,1m)	96dB (1w,1m)
Frequency Response	80 - 20,000Hz	85 - 20,000Hz
Dispersion Angle	Horizontal : 200 $^{\circ}$ (1kHz); 98 $^{\circ}$ (4kHz) Vertical : 110 $^{\circ}$ (1kHz); 26 $^{\circ}$ (4kHz)	Horizontal : 200 $^{\circ}$ (1kHz); 98 $^{\circ}$ (4kHz) Vertical : 46 $^{\circ}$ (1kHz); 39 $^{\circ}$ (4kHz)
Speaker Component	10cm Cone type x 2	10cm Cone type x 4
Connection	Speaker cord (2-core cable cord \varnothing 6mm (0.24"), gray)	
IP Code	IP 44	
Finish	Enclosure case : Extrude Aluminum, Black, Paint Side panel : Resin, Black, Paint Punched Net : Surface tread steel plate, Black, Paint	
Dimensions	140(W) x 315(H) x 140(D)mm	140(W) x 560(H) x 140(D)mm
Weight	2.2kg	2.7kg
Accessory	Speaker Bracket ...1, Wall Bracket...1, BH Screw M5 x 60 Fe Blk 3-SEMS...1	

Digital Speaker Processor

Digital Speaker Processor

DP-SP3

- **Sampling 24-bit 96kHz untuk suara yang jelas, jernih, dan berkualitas tinggi**
- Memiliki seluruh fitur penting untuk pemrosesan audio : compressor, parametric, equalizer, output delay, dan mute
- Cocok untuk digunakan pada rumah ibadah, gymnasium, dan resto berukuran menengah
- Pengoperasian jarak jauh yang fleksibel



Model	DP-SP3
Frequency Response	20 Hz ~ 20 kHz, ± 1 dB
Sampling Frequency	96kHz
Dynamic Range	110dB or more
Distortion	0.03% or less, 1kHz, +4dB* input/output 20Hz-20kHz BPF
Crosstalk	-80dB or less, 1kHz
Input	2 channels, +4dB* (Max. +24dB*), 10k Ω , electronically-balanced, removable terminal block (3P)
Output	6 channels, +4dB* (Max. +24dB*), 10k Ω , applicable load 600 Ω or more, electronically-balanced, removable terminal block (3P)
A/D Converter	24 bits
D/A Converter	24 bits
Signal Processing Section	
Equalizer / Filter	Parametric equalizer: 20Hz - 20kHz, ± 15 dB, Q: 0.267 - 69.249 Filter: High-pass filter; 20Hz - 20kHz, 6dB/oct, 12dB/oct Low-pass filter; 20Hz - 20kHz, 6dB/oct, 12dB/oct Notch filter; 20Hz -20kHz, Q:8.651 - 69.249 All-pass filter; 20Hz -20kHz, Q: 0.0267 - 69.249 High-shelving filter; 20 - 20kHz, ± 15 dB Low-shelving filter; 20 - 20kHz, ± 15 dB Horn Equalizer; 20kHz, 0 - 18dB in 0.5dB steps
Crossover	2ways, 3ways, 4ways Crossover filter: 20Hz -20kHz, 6dB/oct, 12dB/oct, 18dB/oct, 24dB/oct, -15 to +12dB, polarity switchable Delay: 0 -170.656ms in 0.01ms steps
Compressor	Threshold: -20 to +20dB* in 1dB steps Ratio: 1:1, 1.1:1, 1.2:1,1,3:1, 1.5:1, 1.7:1, 2:1, 2.3:1, 2.6:1, 3:1, 4:1, 7:1, 8:1,10:1, 12:1, 20:1, ∞ :1 Attack time: 0.2ms - 5s Release time: 10ms - 5s
Delay	Delay time: 0-682.656ms in 0.01ms steps
Matrix	2 x 6
Crosspoint Gain	$-\infty$ to 0dB in 1dB steps
Function	Input PAD (-14dB) control, analog output attenuator ($-\infty$ to 0dB in 1dB steps) control, EQ characteristic library four TOA speakers, input/output level indicator (4-point LED indicator), output MUTE switch x 6
Contact Inputs	4channels, open voltage: 5V DC, short-circuit current: 5mA, removable terminal block (5P), control function: preset memory selection, volume control and mute
Network	Network I/F: 1 channel of 10BASE-T/100BASE-TX (auto-negotiation), RJ45 connector, connection via switching hub/ Network protocol : TCP/ IP/ Connection cable: Shielded Cat.5 or higher twisted pair cable for LAN (Cat. 5 or higher twisted pair cable for LAN (Cat. 5-STP or better) / Maximum cable length: 100m (between DP-SP3 and switching hub)

*0dB = 0.775V

Prosound Speaker Series

Coaxial Array Speaker

ZS-HS1200BT/WT | ZS-HS1500BT/WT



- Baik untuk pemasangan temporer maupun permanen, dapat digunakan sebagai speaker floor monitor
- Sistem unit 2 arah yang sudah dilengkapi woofer berdiameter besar (12"/15") dan speaker array
- Konektor terminal input ganda (speakon dan terminal sekrup)
- Dilengkapi built-in trafo matching untuk penggunaan impedansi tinggi
- Tersedia bracket pemasangan opsional dalam berbagai varian

Model	ZS-HS1200BT/WT	ZS-HS1500BT/WT
Rated Input	Continuous pink noise : 100W, Continuous program : 300W	
Rated Impedance (100V Line)	97dB	98dB
Rated Impedance (70V Line)	8Ω/100 V line : 170Ω, 330Ω, 670Ω 70V line : 83Ω, 170Ω, 330Ω, 670Ω	8Ω/100 V line : 170Ω (60W), 330Ω (30W), 670Ω(15W) 70V line : 83Ω(60W), 170Ω(30W), 330Ω(15W), 670Ω (7.5W)
Frequency Response	70Hz - 20kHz	60Hz - 20kHz
Speaker Component	Low: 30cm cone, High: Balanced dome tweeter x 6	Low: 38cm cone, High: Balanced dome tweeter x 6
Finish	Enclosure: Polypropylene, black orwhite. Punched Net : Surface - treated steel plate, black or white	
Dimensions	361(W) x 448(H) x 320(D) in mm	451(W) x 560(H) x 400(D) in mm
Weight	10kg	14kg

Line Array Speaker

Z-HX Series- AS



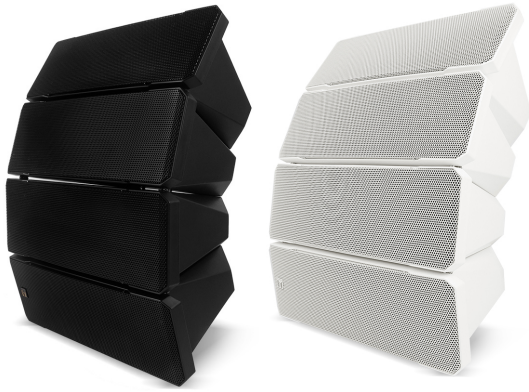
Line array berdispersi lebar yang powerful dan praktis untuk berbagai opsi pemasangan. Keberhasilan memenangkan penghargaan dengan desain 4 buah modul per unitnya. Turut menjadikan seri Z-HX ini sebagai pilihan yang tepat untuk memenuhi kebutuhan penggunaan pada berbagai sudut dispersi suara.



Z-7B-HX-2M

- Pilihan yang lebih praktis dan harga yang lebih terjangkau
- Power handling: 375W Continuous Program@16 ohms
- Satu modul terdiri dari 2 x 5.5" speaker LF dan dilengkapi 1" HF compression driver waveguide
- Mode 0° memfasilitasi pengaturan line array yang paling efektif

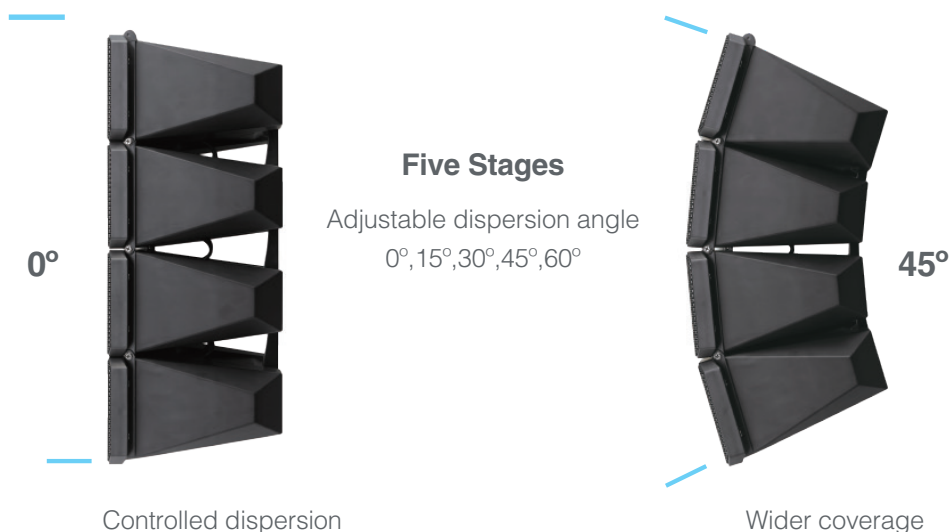
Model	Z-7B-HX-2M
Enclosure	Bass-reflex type
Power Handling Capacity	Continuous pink noise: 125W (IEC60268-5: 350W) / Continuous program: 375W
Rated Impedance	16Ω
Sound Pressure Level (1W/1m)	93dB
Frequency Response	75Hz – 20kHz
Crossover Frequency	1.7kHz
Directivity Angle	Vertical: Depending on directivity angle mode
Speaker Component	Low frequency: 13cm cone-type x 4 High frequency: Wave front control horn with compression driver x 2
Input Terminal	Speakon NL4MP x 2
Finish	Enclosure: Polypropylene, black; Punched net: Surface-treated steel plate, black, paint
Dimensions	497(W) x 345(H) x274(D)mm
Weight	16kg



Z-7HX-AS Series

- Variable dispersion line array dengan teknologi SYNC-Drive wave guide
- Menggunakan daya 750W continuous program 8Ω
- Satu modul terdiri dari 2 x 5.5" speaker LF dan dilengkapi 1" HF compression driver waveguide
- Sudut dispersi yang dapat disesuaikan: 0, 15, 30, 45, dan 60° (60° memerlukan HY-60D) Mode 0° memfasilitasi pengaturan line array yang paling efektif
- Dapat ditumpuk hingga maksimal 4 unit speaker
- Built-in horn isophasic dengan pengaturan wave-front memungkinkan kontrol HF yang tepat dan produksi audio HF yang optimal
- Tersedia varian dengan sertifikasi IPX4

Model	Z-7B-HX-AS	Z-7W-HX-AS	Z-7BW-HX-AS	Z-7WW-HX-AS
Enclosure	Bass-reflex type		Sealed type	
Power Handling Capacity	Continuous pink noise: 250W (IEC60268-5: 350W) / Continuous program: 750W			
Rated Impedance	8Ω			
Sound Pressure Level (1W/1m)	100dB			
Frequency Response	75Hz – 20kHz		105Hz – 20kHz	
Crossover Frequency	1.7kHz			
Directivity Angle	Horizontal: 100°, Vertical: Depending on directivity angle mode			
Speaker Component	Low frequency: 13cm cone-type x 8 High frequency: Wave front control horn with compression driver x 4			
Input Terminal	Speakon NL4MP x 2 and M4 screw terminal, distance between barriers: 9mm (0.35")		M4 screw terminal, distance between barriers: 9mm (0.35")	
Water Protection	-		IPX4 (Install with every speaker module tilted downward from the horizontal)	
Finish	Enclosure: Polypropylene, black or white (Z-7B/W-HX-AS) Punched net: Surface-treated steel plate, black or white (Z-7B/W-HX-AS), paint / Hanging bracket: Steel plate, t3.0, black or white (Z-7B/W-HX-AS), paint		Enclosure: Polypropylene, black or white (Z-7B/WWP-HX-AS), Punched net: Surface-treated steel plate, black & white (Z-7B/WWP-HX-AS), rust proof coating	
Dimensions	497(W) x 664(H) x 274(D)mm			
Weight	30kg			

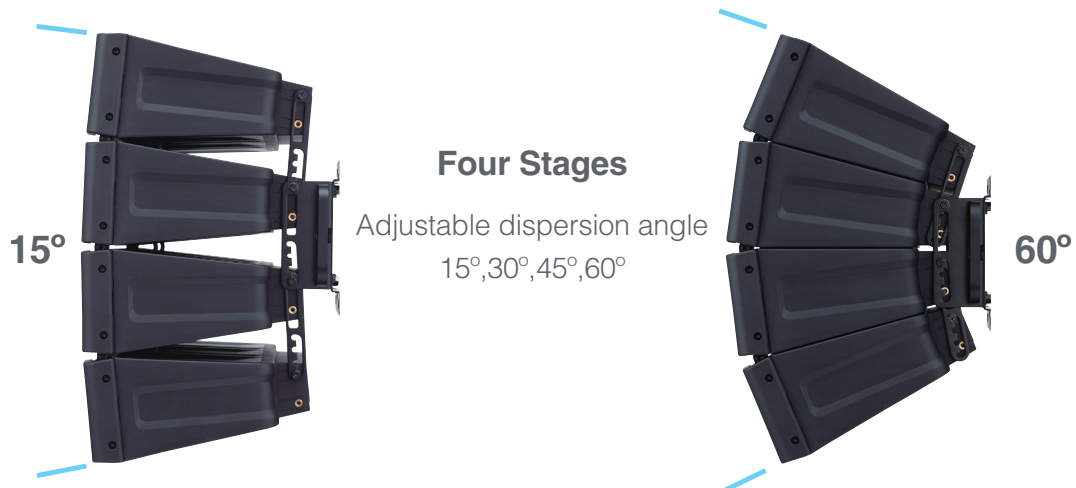




Z-5B-HX2 Series

- Pilihan yang lebih praktis dan harga yang lebih terjangkau
- Power handling: 400W Continuous Program@8 ohms
- Satu modul terdiri dari 1 x 4.72" cone-type driver LF dan 3 x 1" balanced dome tweeter
- Sudut dispersi yang dapat disesuaikan: 15, 30, 45 and 60°
- Dapat ditumpuk hingga maksimal 4 unit speaker
- Tersedia varian dengan sertifikasi IPX4

Model	Z-5B-HX2	Z-5W-HX2	Z-5BW-HX2	Z-5WW-HX2
Enclosure	Bass-reflex type		Sealed type	
Power Handling Capacity	Continuous pink noise: 200W / Continuous program: 400W			
Rated Impedance	8Ω			
Sound Pressure Level (1W/1m)	96dB (60° mode), 97dB (45° mode), 98dB (30° mode), 99dB (15° mode)			
Frequency Response	70Hz – 20kHz (-10dB) (60° mode) 75Hz – 20kHz (-10dB) (45° mode) 80Hz – 20kHz (-10dB) (30° mode) 85Hz – 20kHz (-10dB) (15° mode)		95Hz – 20kHz (-10dB) (60° mode) 100Hz – 20kHz (-10dB) (45° mode) 105Hz – 20kHz (-10dB) (30° mode) 110Hz – 20kHz (-10dB) (15° mode)	
Crossover Frequency	4kHz			
Directivity Angle	Horizontal: 100° (over 2kHz), Vertical: 60° (over 800Hz), 45° (over 1.2kHz), 30° (over 1.6kHz), 15° (over 3.2kHz) variable			
Speaker Component	Low frequency: 12cm cone-type x 4, High frequency: Balanced dome-type x 12			
Input Terminal	Speakon NL4MP x 2 and M4 screw terminal		-	
Speaker Cord	-		2-core cabtyre cord with diameter of 6mm	
Water Protection	-		IP X4 (Install with every speaker module downward)	
Finish	Enclosure: Polypropylene, black or white / Punched net: Surface-treated steel plate, black or white			
Dimensions	408(W) x 546(H) 342(D)mm			
Weight	16kg			



Accessories - for TOA Line Array Speaker

		Article number
	Speaker Connection Bracket, white	HY-CN7W* HY-CN7W-WP
	Speaker Connection Bracket, black	HY-CN7B* HY-CN7B-WP
	Angle Adjustment Bar, white Allows the dispersion angle 60 degrees.	HY-60DW* HY-60DW-WP
	Angle Adjustment Bar, black Allows the dispersion angle 60 degrees.	HY-60DB* HY-60DB-WP
	Rigging Frame, white	HY-PF7W*
	Rigging Frame, black	HY-PF7B*
	Rigging Bracket, white	HY-VM7W*
	Rigging Bracket, black	HY-VM7B*

*Indoor use only

		Article number
	Wall Mounting Bracket, white	HY-WM7W*
	Wall Mounting Bracket, black	HY-WM7B*
	Rigging Bracket, white, outdoor use	HY-TM7W-WP
	Rigging Bracket, black, outdoor use	HY-TM7B-WP
	Wall Mounting Bracket, white, outdoor use	HY-MS7W-WP
	Wall Mounting Bracket, black, outdoor use	HY-MS7B-WP
	Matching Transformer Adapter	HY-MT7
	Speaker Stand Adapter	HY-ST7*

Subwoofer

Z-120BFB | Z-120WFB

Z-FB152B-AS

- Sistem subwoofer yang praktis untuk penggunaan di dalam ruangan dengan daya woofer berukuran 30cm (12") dan 38cm (15")
- Di desain khusus untuk penggunaan bersama dengan speaker TOA tipe Z-5, Z-7, atau tipe speaker full range lainnya
- Sangat cocok digunakan untuk menghasilkan frekuensi rendah yang dinamis pada pemasangan permanen maupun temporer

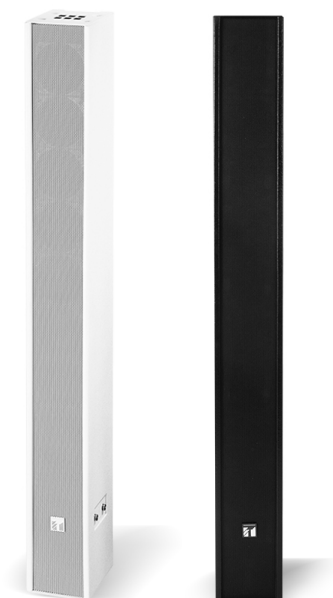


Model	Z-120BFB	Z-FB152B-AS
Rated Input	Continuous pink noise : 200W, Continuous program : 600W	Continuous pink noise : 300W, Continuous program : 900W
Impedance	8Ω	8Ω
Sensitivity	90dB (1W, 1m) at installation in free sound field 96dB (1W, 1m) at installation in 1/2 free sound field	91dB (1W, 1m, Avg. at 70Hz, 100Hz, 150Hz)
Frequency Response	40Hz - 1.2kHz (-10dB)	40Hz - 400Hz (-10dB) with DP-SP3*
Speaker Component	30cm cone-type	38cm(15") cone-type
Input Terminal	Speakon NL4MP x 2 and M4 screw terminal, distance between barriers : 11mm	Speakon NL4MP x 2 and M4 screw terminal
Finish	Enclosure: Plywood Punched Net : Surface-treated steel plate, black, paint	Enclosure: MDF, black, urethane paint Punched Net : Surface-treated steel plate, black, paint
Dimensions	361(W) x 448(H) x 320(D) in mm	505(W) x 530(H) x 655(D) in mm
Weight	10kg	35kg

Slim Array Speaker

ZS-S60CB/CW

Dilengkapi dengan 9 unit speaker berukuran 8cm yang disusun secara vertikal, speaker slim array memastikan kualitas dan kejelasan suara yang optimal dari kontrol penyebaran suaranya 90° horizontal x 0° vertikal. Fitur ini memungkinkan speaker untuk menghasilkan audio yang jernih bahkan di ruangan dengan permasalahan gema. Tipe speaker slim array ini juga dapat ditumpuk untuk meningkatkan jarak transmisi suara dan area cakupannya secara vertikal. Penggunaannya pun cukup fleksibel dengan keberadaan selektor rotari yang dapat disesuaikan untuk impedansi rendah maupun tinggi.

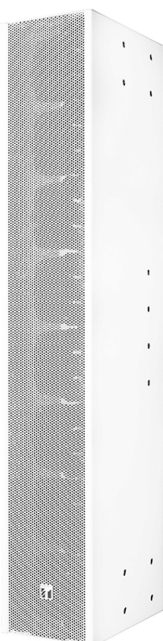


- Kontrol penyebaran suara 90° horizontal x 0° vertikal
- Terdapat selektor rotari untuk penggunaan impedansi rendah maupun tinggi
- Tersedia aksesoris bracket untuk fleksibilitas pemasangan
- ZS-S60CB/CW x 2 unit dapat ditumpuk untuk area cakupan suara yang lebih luas

Model	ZS-S60CB/CW
Enclosure	Bass-reflex type
Max Input Power (Low Impedance)	120W (Continuous pink noise)
Rated Input (High Impedance)	60W (Continuous pink noise)
Rated Impedance	Low Impedance: 8Ω 100V Line: 167Ω (60W), 330Ω (30W), 500Ω (20W), 1kΩ (10W), selectable
Sensitivity (1W/1m)	95dB
Frequency Response	180Hz – 15kHz
Directivity Angle	Horizontal : 90° ; Vertical : 0°
Speaker Component	8cm (3") cone-type x 9
Finish	Enclosure : MDF, Wet paint, black / white Punched Net : SECC, Wet paint, black / white
Dimensions	100(W) x 883(H) x 130(D)mm
Weight	8,2kg

ZS-S240CW-AS

Speaker slim array ini merupakan speaker 2 arah yang terdiri dari 32 unit speaker; 8 unit woofer berukuran 10cm dan 24 unit dome tweeter berukuran 2.5cm yang disusun secara vertikal untuk menghasilkan suara yang linear pada penggunaan di dalam ruangan, seperti rumah ibadah, ruang aula, maupun ruang serbaguna lainnya.



- Kontrol penyebaran suara 100° horizontal x 5° vertikal
- Speaker 2 arah yang sejajar dengan tweeter
- Dapat ditumpuk hingga 2 unit speaker untuk area cakupan suara yang lebih luas

Model	ZS-S240CW-AS
Enclosure	Bass-reflex type
Max Input Power (Low Impedance)	240W (Continuous) ; 480W (Program)
Rated Impedance	8Ω
Sensitivity (1W/1m)	94dB
Frequency Response	95Hz – 20kHz
Directivity Angle	Horizontal : 100° ; Vertical : 5°
Speaker Component	Low Frequency : 10cm (4") Cone type woofer x 8 High Frequency : 2.5cm (1") Balanced dome tweeter x 24
Finish	Enclosure : White painted MDF Board Net Grille : White painted punched steel plate
Dimensions	160(W) x 950(H) x 262(D)mm
Weight	17kg

Long Range Slim Array Speaker

Z-HA1010-AS

Speaker long range slim array TOA Indonesia ini terdiri dari beberapa speaker horn yang disusun secara vertikal, sehingga memungkinkan jarak cakupan suara yang dihasilkan lebih jauh bila dibandingkan dengan beberapa speaker horn konvensional yang digabungkan. Speaker array tipe Z-HA1010-AS menghasilkan pola penyebaran suara 90° horizontal x 15° vertikal yang cocok digunakan untuk menyampaikan pemberitahuan massal atau pengumuman di berbagai area luar ruang, seperti : lahan parkir, taman dan tempat rekreasi, hotel dan resor, arena olahraga, fasilitas militer dan terminal transportasi umum.



Model	Z-HA1010-AS
Rated Input	60W
Rated Impedance	170Ω (60W), 330Ω (30W)
Sound Pressure Level (1W/1m)	114dB
Frequency Response	350Hz – 7kHz
Directivity Angle	Horizontal : 90° (2kHz) ; Vertical : 15° (2kHz)
Speaker Component	Horn speaker unit x 8
Water Protection	IP66
Finish	Case, Panel: Aluminum, salt-resistant, paint, grey Front Grille: Aluminum, black
Dimensions	167(W) x 1233(H) x 140.5(D)mm
Weight	13,5kg

Line Array Speaker System (S Type)

SR-S4L | SR-S4S

Speaker line array TOA Indonesia tipe S ini merupakan speaker line array 2 arah yang di desain khusus dengan bentuk yang ramping, sehingga ideal untuk pemasangan permanen pada bagian menara. Terdiri dari 32 unit speaker; 8 unit woofer berukuran 10cm dan 24 unit driver frekuensi tinggi, speaker tipe SR-S4L dan SR-S4S memiliki sistem yang membatasi penyebaran suara secara vertikal agar bisa terfokus pada area pendengar yang ditargetkan.



Model	SR-S4L	SR-S4S
Enclosure	Bass-reflex type	
Power Handling Capacity	Continuous program : 600W	
Rated Impedance	8Ω	
Sensitivity (1W,1m)	94dB	93dB
Frequency Response	70Hz - 20kHz (when using the optional DP-SP3)	
Crossover Frequency	3.5kHz	
Directivity Angle	Horizontal: 90° Vertical: 0° (within the range of speaker height)	Horizontal: 90° Vertical: 10°
Speaker Component	Low frequency: 10cm (3.93") cone-type x 8 High frequency: 2.5cm (0.98") balanced dome-type x 24	
Input Terminal	M5 screw terminal, distance between barriers: 12.2mm and Neutrik NL4MP x 2	
Finish	MDF, white, paint. Punched steel plate, white, acrylic paint	
Dimensions	160(W) x 895(H) x 255(D) in mm	160(W) x 892(H) x 303(D) in mm
Weight	16kg	

2-Way Weatherproof Loudspeaker System

ZS-760B/W-AS

- Sangat mudah digunakan; cocok untuk penggunaan alarm suara, pengumuman publik dan pemasangan musik latar dengan speaker 2 arah
- Tersertifikasi IP66; tahan segala cuaca, baik air maupun debu, ideal untuk pemasangan di area luar ruangan
- Dilapisi dengan cat khusus untuk mencegah degradasi warna dan memastikan kondisi eksterior produk tahan lama
- Terdapat selektor rotari untuk kemudahan pengaturan impedansi rendah maupun tinggi
- Tersedia berbagai varian aksesoris braket untuk pemasangan yang fleksibel pada platform, langit-langit ruangan, dinding, atau pada tiang.



Model	ZS-760B-AS	ZS-760W-AS
Rated Input	60W (high impedance)	
Rated Impedance	100V Line: 170Ω (60W), 330Ω (30W), 670Ω (15W), 1.3kΩ (7.5W) 70V Line: 83 Ω (60 W), 170 Ω (30 W), 330 Ω (15 W), 670 Ω (7.5W)	
Sensitivity (1W,1m)	100dB	
Maximum SPL (60W,1m)	117dB	
Frequency Response	100Hz - 20kHz	
Crossover Frequency	2.5kHz	
Directivity Angle	Horizontal: 90°; Vertical : 80°	
Speaker Component	Low Frequency: 16 cm (6") cone-type High Frequency: 2.5 cm (1") dome tweeter	
Dust/Water Protection	IP66	
Connection	Speaker cord (Hot: Black; Com: White)	
Finish	Enclosure: ABS, Black, Paint Coating Punched Net: Surface-treated Steel Plate, Black, Paint Coating Bracket: Stainless Steel, Black, Powder Coating	Enclosure: ABS, White, Paint Coating Punched Net: Surface-treated Steel Plate, White, Paint Coating Bracket: Stainless Steel, White, Powder Coating
Dimensions	388W) x 310(H) x 367(D) in mm	
Weight	7.4kg	

Microphone

Gooseneck Microphone

ZM-380-AS



Headset Microphone

ZM-371HS-AS



Model	ZM-380-AS
Element	Condenser Microphone
Polar Pattern	Cardioid
Rated Impedance	750Ω, Balanced
Rated Sensitivity	-39dB ±1dB (1kHz, 0dB = 1V/Pa)
Power	3V DC (2 x "AA Bateria) or phantom power (9-52V)
Frequency Response	50-16kHz
Output Connector	XLR-3-32 Equivalent
Operating Temperature	0oC - 40oC (32oF -104oF)
Finish	Stand Mic : ABS Resin, Black, Paint Mic Shaft : Copper Alloy, Black, Paint
Dimensions	110(W) x 145(L) x 532(H) in mm
Weight	550g (excludes batteries)

Model	ZM-371HS-AS
Type	Electret Condenser Microphone
Directivity	Unidirectional
Rated Impedance	5.6kΩ, Unbalanced
Rated Sensitivity	-37dB ± 3dB (1kHz, 0dB = 1V/Pa)
Frequency Response	100Hz - 20kHz
Cable Length	10m (10,000mm)
Connector	1/4" unbalanced phone Jack
Finish	Battery case: ABS, Black; Headset: Metal Black
Dimensions	89.5(W) x 38(H) x 19(D) in mm
Weight	154g (without battery)
Battery	1pc x AA (R6S or UM-3U)

Horn Speaker

ZH-5050-AS

ZH-5050M-AS



Model	ZH-5050-AS	ZH-5050M-AS (Dengan Transformer)
Rated Input	50W	
Rated Impedance	16Ω, Low Impedance	100V line: 200Ω (50W), High Impedance
Sound Pressure Level (100W/1m)	110dB(1W,1m)	
Frequency Response	160Hz - 6kHz	
Dust/ Water Protection	IP65	
Finish	Horn Flare, Aluminum, white, coating Reflector Horn : Plastic resin, white Bracket Holder : Aluminum, gray, coating Bracket : Steel, gray, coating Rear Cover : Plastic resin, gray Screw and Bolts : Stainless steel	
Dimensions (φ x D)	φ500(W) x 420(D)mm (φ19.69" x 16.53")	φ500(W) x 463(D)mm (φ19.69" x 18.23")
Weight	4.4kg	5kg

Driver Unit

ZH-662D-AS

ZH-662MD-AS



Model	ZH-662D-AS	ZH-662MD-AS
Horn		ZH-652T
Rated Input	60W	
Line Voltage		100V Line
Rated Impedance	16Ω	100V Line: 170Ω (60W), 330Ω (30W), 670Ω (15W)
Sound Pressure Level (100W/1m)	110dB(1W,1m)	
Frequency Response	150 - 8.000Hz (when operated with JIS C5504 standard horn)	
Dimensions (φ x D)	139 x 108mm	139 x 151mm
Weight	2kg	2.7kg
Material	Upper Cover: Aluminum, White, Powder Coating. Unit Case: HIPS, White. Screws: Stainless Steel. Cable Speaker : PVC insulated cabtyre, white	

Wireless Microphone Systems

Single Channel Wireless Microphone

Z-WS420-AS

Z-WS430-AS

Dual Channel Wireless Microphone

Z-WS422-AS



Microphone	Handheld Microphone	Wireless Transmitter
Microphone unit	Dynamic with cardioid pattern	Back Electret Condenser, Omni-directional
RF Carrier Power	10mW	
Audio Frequency Response	80 Hz - 15 kHz	50 Hz - 15 kHz
Audio input Level	140 dB SPL (maximum)	-6 dBV (maximum), mic gain 0dB
Battery Life	approx. 10 hours	
Battery	1 AA size alkaline battery, 1.5 V	
Finish	Resin, coating	
Dimensions	250 x φ55 mm	62 (W) x 100 (H) x 25 (D) mm (with clip)
Weight	245 g (with battery)	85 g (with battery)

Receivers	Single Channel	Dual Channel
Diversity Reception	AC mains (supplied AC-DC adapter must be used)	
Frequency Range	633 - 671 MHz, UHF	
Sensitivity	10μV at 45 dBA S/N	
Squelch (SQ)	Tone SQ, Carrier SQ, Noise SQ	
Audio Frequency Response	50 Hz - 15 kHz	
Audio Output Level (Maximum)	S4.04-RX Balanced (XLR socket) : -20 dBu Unbalanced (1/4" jack socket) : 10 dBu	S4.04-RX Balanced (XLR socket) : 16 dBu Unbalanced (1/4" jack socket) : 10 dBu
Power Supply	11 - 18 VDC 300 mA	11 - 18 VDC 500 mA
Dimensions	215 (W) x 39 (H) x 102 (D) mm (excluding antenna and BNC)	210 (W) x 44 (H) x 202 (D) mm (excluding antenna)
Weight	480g	720g
Option	Mounting bracket kit: MB-S4RX (MB-S4RX-5)	Mounting bracket kit: MB-WT3 (for rack mounting one S4.10-RX2) MB-WT4 (for rack mounting two S4.10-RX2)

Dual Channel Wireless Microphone

Z-WS422-AS



Single Channel Wireless Microphone

Z-WS420-AS



Z-WS430-AS





Scan for more info



Specifications are subject to change without notice.