

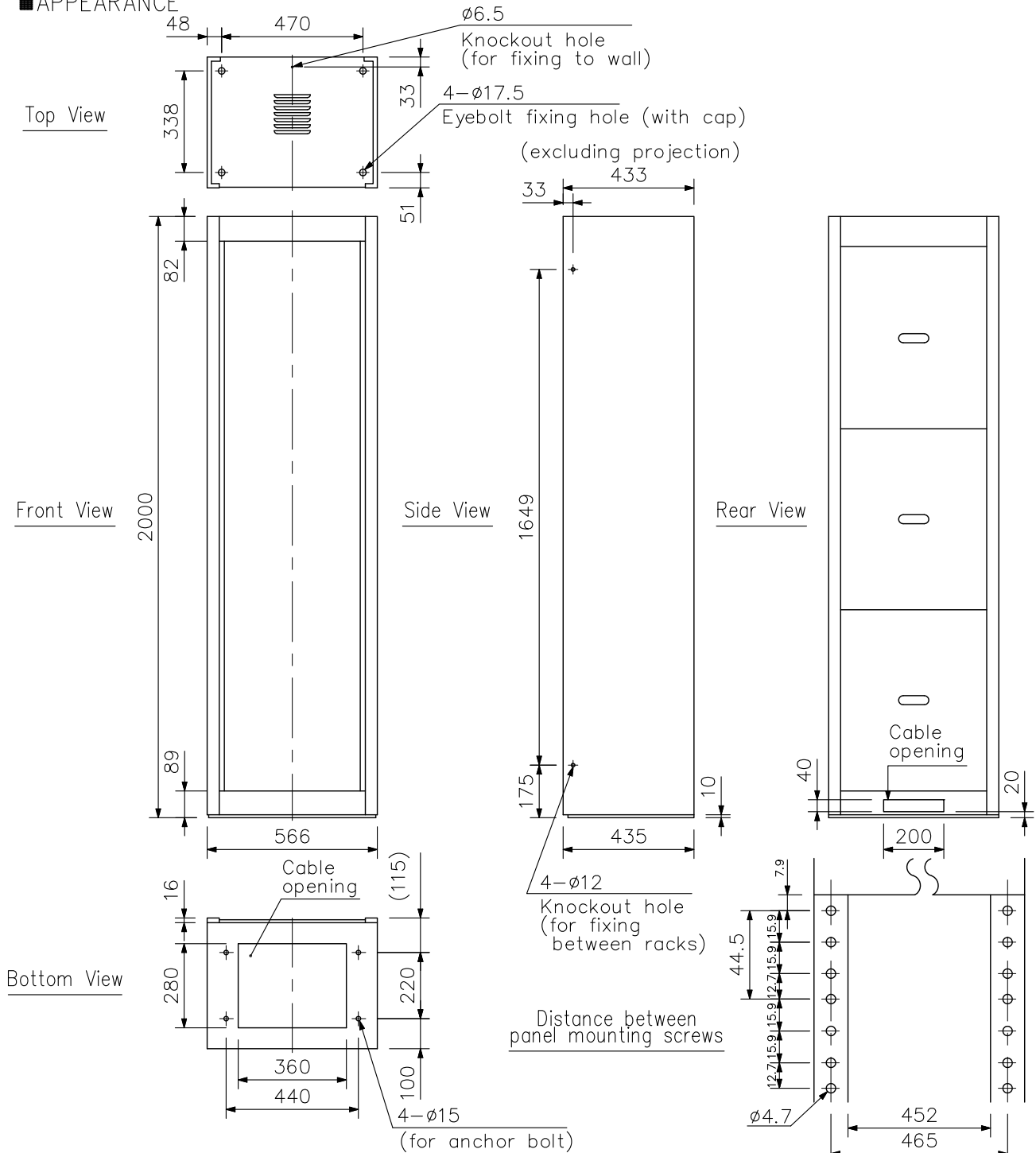
DESCRIPTION

The CR-413 equipment rack complies with the EIA standard and can accommodate up to 41 standard panels (44.5 mm). An M16 eyebolt can be mounted to the top plate.

SPECIFICATIONS

Finish	Chassis section: Surface treated steel plate Top plate/flame 2 mm thick Reinforcement 1.6 mm thick Base: Steel plate (2 mm thick), powder coating, black Design section: Pre-coated steel plate (1 mm thick), ivory, semi-gloss
Dimensions	566 (W) × 2000 (H) × 435 (D) mm
Weight	60 kg
Accessory	Screw cover2, Screw cover rail8, Cable clip20, Fixing screw1 set
Option	Blower unit: BU-412, Rack runner: YA-706

APPEARANCE



UNIT:mm SCALE:1/20 Note: Numerical values in parentheses are for reference only.