



ZA-6224D-AS

Digital Mixer Amplifier

Mosque
sound
made simple
Pray with faith.

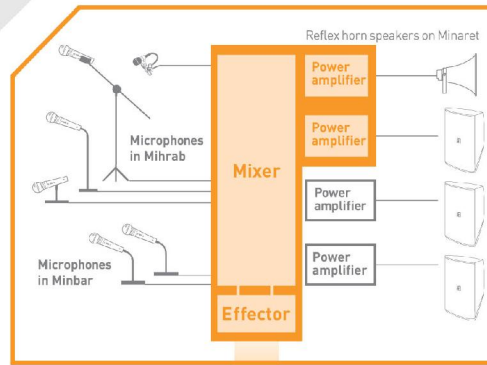


Mosque sound made simple

Pray with faith.

ZA-6224D-AS Digital Mixer Amplifier

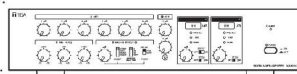
Introducing the ZA-6224D-AS, the latest digital mixer amplifier designed specifically for mosques. The ZA-6224D-AS incorporates DSP function and a two channel class-D amplifier. An optional remote controller is also available, making it simple and easy to use. The ZA-6224D-AS is the perfect choice for your mosque.



All in One



PA Rack

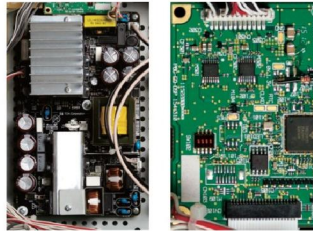


COMPACT



Superior Sound QUALITY

Built-in digital amp module + DSP module, designed with state-of-the-art TOA technology.



SAFE, reliable system

Loudspeakers are less vulnerable to damage, thanks to the equipped high-pass filter.



High-pass filter

EASY Operation

Simply designed, compactly installed. Standardized remote controller also offers easy operation.



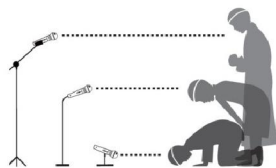
Built-in Selectable EQ setting for reduces acoustic feedback and ensures more intelligible voice sound.



Built-in effector realizes celestial sound even in small mosques.

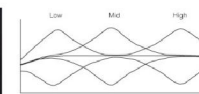


Optimal microphone sensitivity

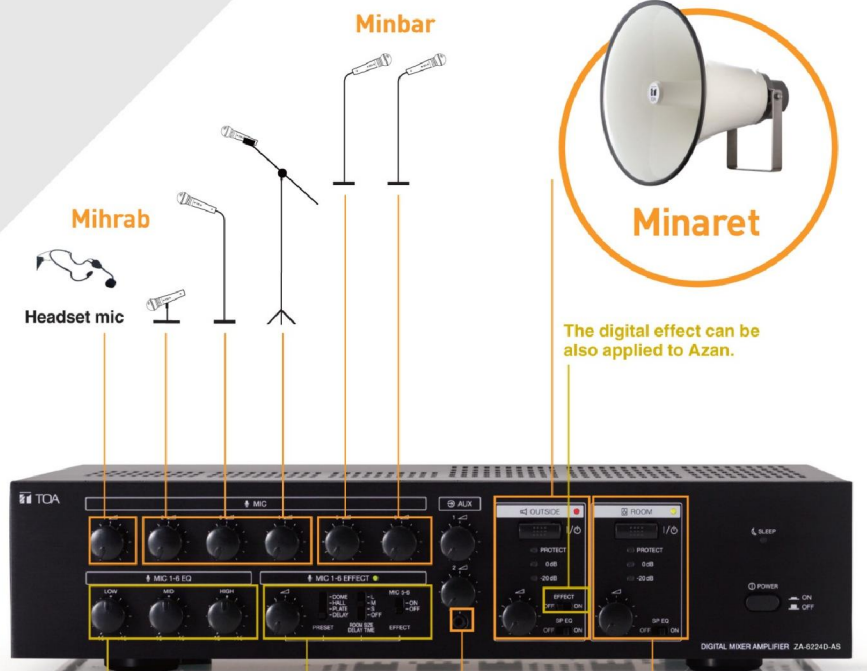


Like the left figure, since there is some distance between the microphones and the imam, the sensitivity of these microphones are higher.

The 3-band EQ are effective for all mic inputs.



Connection



Mihrab
Headset mic

Minbar



The digital effect can be also applied to Azan.



Connectable to an external sound player

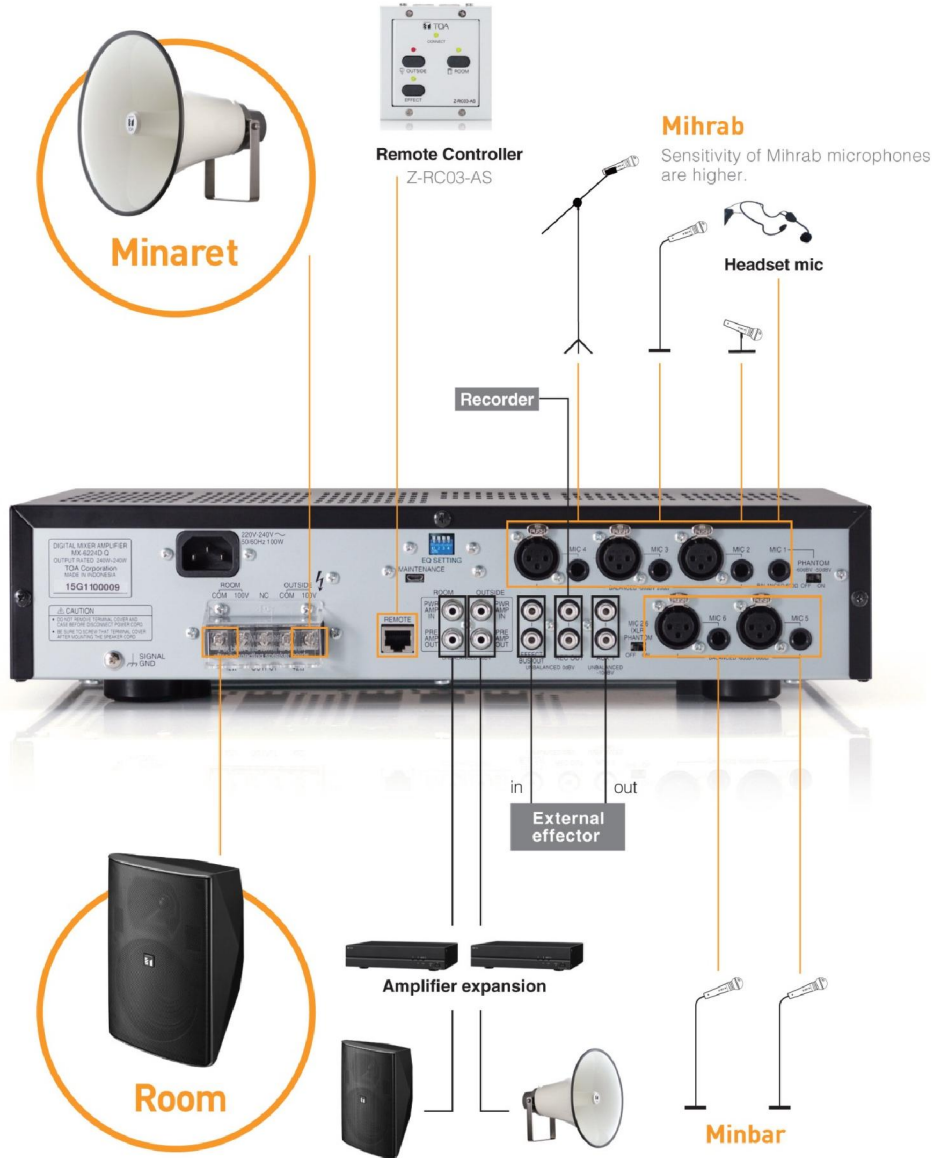
3-band EQ for all microphone inputs
Easy to reduce acoustic feedback

Digital effector for the microphone input 1-4/1-6
Realize enough reverberation like large mosques



Mosque sound made simple

Pray with faith.



Digital Mixer Amplifier and Remote Controller



ZA-6224D-AS

Specifications

Power Source	220V - 240V AC, 50/60Hz
Power Output	240W x 2 channels (100V, 42Ω, rated output)
Power Consumption	100W (according to IEC60065), 570W (at rated output, both channels)
Amplification System	Class D, Output transformerless galvanic isolated output
Frequency Response	50Hz - 20kHz, ±3dB (at 1/3 rated output power, rated load, from power amplifier input)
Distortion	1% or less (at 1kHz, 1/3 rated output power)
Input	MIC 1: -50dB* (24V phantom powered) / -60dB* (phantom power OFF) 600Ω, electronically-balanced, φ6,3mm phone jack (3P : balance) MIC 2-4: -66dB*, 200Ω, electronically-balanced, XLR-3-31 type and φ6,3mm phone jack (3P : balance) (either one usable) MIC 5-6: -60dB*, 600Ω, electronically-balanced, XLR-3-31 type and φ6,3mm phone jack (3P : balance) (either one usable) AUX 1: -10dB*, 10kΩ mixed monaural, unbalanced, RCA pin jacks (1 pair) AUX 2: -20dB*, 10kΩ mixed monaural, unbalanced, φ3,5mm mini jack (3P: stereo) Power amplifier input: 0dB*, 10kΩ, unbalanced, RCA pin jacks (1 each for ROOM and OUTSIDE outputs)
Output	Speaker Output: 2 zones, 100V(42Ω), galvanic isolated balanced, M4 screw terminal Recording Output: 0dB*, 600Ω monaural, unbalanced, RCA pin jacks (1 pair) Effect Bus Output: 0dB*, 600Ω monaural, unbalanced, RCA pin jacks (1 pair) Pre-amplifier Output: 0dB*, 600Ω monaural, unbalanced, RCA pin jacks (1 each for ROOM and OUTSIDE outputs)
Phantom Power	ON/OFF switchable for MIC 1 and XLR-3-31 type connectors of MIC 2-6
Signal to Noise Ratio	60dB or less (All volume controls: min)
Controls	6 Microphone volume controls, 2 AUX volume controls, 1 ROOM output switch, 1 ROOM volume control, 1 OUTSIDE output switch, 1 OUTSIDE volume control, 1 Effect control (0 to 100%) of effect bus, 1 Effect preset type selection switch (DOME/HALL/DELAY/PLATE), 1 Effect Room size/Delay time selection switch (OFF/small/middle/large), 1 Effect output selection switch (OFF/ON), 1 MIC 5-6 effect switch, 1 Low EQ control (±15dB, 80Hz) for MIC 1-6, 1 Mid EQ control (±15dB, 2,5kHz) for MIC 1-6, 1 High EQ control (±15dB, 12kHz) for MIC 1-6, 1 Speaker EQ (ZH-5025BM/ZH-652MD) switch for OUTSIDE output 1 Power Switch, 1 Phantom switch for MIC1, 1 Phantom switch for MIC 2-6 (XLR-3-31)
Selectable EQ Setting	8 selectable speaker EQ for ROOM output: 1. ZS-F2000BM/WM/BMWP/WMWP 2. ZS-1030B/W 3. ZS-HS1200BT/WT 4. ZS-HS1500BT/WT 5. ZS-102C/ZS-202C 6. ZS-203/ZS-403/ZS-603CB/CW 7. ZS-S60CW 8. ZS-S240CW + ZT-200
Indicators	SLEEP indicator Output Level meters (2 points, -20dB and 0dB) for ROOM and OUTSIDE Protection indicators for ROOM and OUTSIDE amplifiers Output indicators for ROOM and OUTSIDE EFFECT indicator for MIC 1-6
Ventilation	Natural air cooling
Operating Temperature	0 to 40°C (32 to 104°F)
Dimensions	420(W) x 99,8(H) x 360,6(D) in mm (16,54" x 3,93" x 14,2")
Installation Method	Desktop mount, Rack mount with mounting bracket MB-25B (option)
Weight	6,1kg (13,45lb)
Finish	Front Panel: Aluminum, black, alumite; Case: Steel plate, black, paint
*0dB = 1V	

Remote Controller



Z-RC03-AS

Equipped with 2 Ethernet RJ-45 ports.
Maximum cable length is 200 m (656.17 ft).
Can be connected by Category 5 twisted pair cable for LAN.

Optional Products

Microphones



ZM-520
Unidirectional Microphone

Dynamic, high-cost performance characteristic.



ZM-300-AS
Condenser Microphone

Condenser Microphone employs electret condenser type microphone, featuring high intelligibility and suitable for speech application



ZM-370HS
Headset Microphone

Headset Microphone using electret condenser type microphone, featuring high intelligibility and suitable for speech application

Mosque sound made simple

Pray with faith.

Indoor Speakers



ZS-S60CW
Slim Array Speaker

Equipped with 9 vertically arrayed 8cm speaker unit, delivers high clarity sound with a 90° Horizontal x 0° Vertical directivity control. This feature enables it to project clear sound even in rooms with reverberation problem.



ZS-F2000 BM/WM
Wall Mount Box Speakers

2-way bass-reflex speaker with transformer for Hi (100V) impedance with 60W of rated output. Easy to install with equipped bracket. Black(B) and White(W) color variations.

Outdoor Speakers



ZH Series
Horn Speaker

High durability, high heat-resistance and improved low frequency, thanks to polyimide diaphragm and weatherproof materials.

ZH-5025B (25W/16Ω)
ZH-5025BM (25W / 100V)



Reflex Horns
Driver Units

To be used in combination with Horns and Driver units.

ZH-652T Reflex Horns
ZH-652D (50W / 16Ω) Driver Unit
ZH-652MD (50W / 100V) Driver Unit
ZH-662D-AS (60W / 16Ω) Driver Unit
ZH-662MD-AS (60W / 100V) Driver Unit

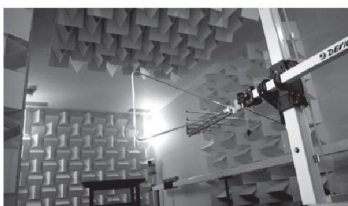
High value of Japanese technology in both Hardware and Software

Quality control on the Factory Floor

TOA uses its very own factories both within Japan and overseas. Numerous engineers from Japan are sent to our overseas production plants to ensure that the state-of-the-art equipment adheres to the same stringent quality control system used in our Japanese production facilities. Furthermore, twice a year members from our Quality Control Division visit overseas production facilities to carry out inspections and make sure that quality standards are being maintained.

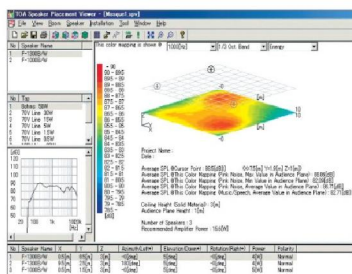
Compliance with Laws and Regulations

TOA is constantly carrying out tests to ensure that products comply with various regulations and standards around the world: safety regulations including UL, CE, CCC, RoHS, WEEE, EN 54, SASO, and REACH; the standards for each country; and ISO 9001. We do this so that consumers have complete peace of mind when using our quality products.



State-of-the-Art Equipment

In order to satisfy the legal requirements and conditions of each country, products must pass a large number of stringent tests. By installing various kinds of testing facilities, such as anechoic/echoic chambers and EMC test chambers, and by carrying out in-house testing, TOA has been able to improve its development efficiency.



TOA Speaker Placement Viewer: Software for Acoustic Simulation

At TOA, we are constantly trying to improve our services and share information with our customers. TOA Speaker Placement Viewer provides an easy way to calculate how many speakers are needed in a room. The software allows virtual placement of TOA Line Array, as well as all TOA Public Address and ProSound speakers.



TOA Corporation

www.toa.co.id | fb : toaindonesia

Specifications are subject to change without notice.