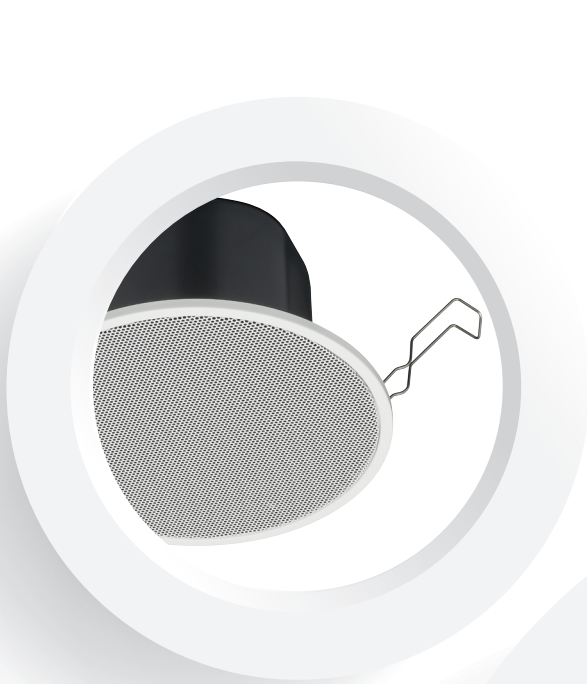




Ceiling Mount Speaker

ZS-1860-AS / ZS-1860F-AS / ZS-2360-AS



FEATURES

- Suitable for voice alarm system and background music system use in high quality sound
- Easy mounting

Specifications

Model	ZS-1860F-AS
Rated Input	6 W (100 V Line), 3 W (70 V Line)
Rated Impedance	100V line: 1.7kΩ(6W), 3.3kΩ (3W), 6.7kΩ (1.5W), 13kΩ (0.8W) 70V line: 1.7 kΩ(3W), 3.3kΩ (1.5W), 6.7kΩ (0.8W), 13kΩ (0.4W)
Sensitivity	95dB (1W, 1m) (330Hz -3.3kHz, pink noise)
Frequency Response	100Hz - 20kHz (peak -20dB)
Speaker Component	12cm (5") cone-type
Dimensions for Fixing Hole	Mounting hole: $\phi 156 \pm 3\text{mm}$ (6.14" \pm 0.12") Ceiling thickness: 5 - 25mm (0.2" - 0.98")
Speaker Mounting Method	Spring Catch
Applicable Cable	Solid wire: 0.5 - 3mm ² (AWG 20 - 12)
Connection	Push wire connection (Bridging terminal-2 branch type)
Finish	Frame: Steel plate, white (RAL 9016 equivalent), paint Grille: Steel net, white (RAL 9016 equivalent), paint Fire dome: Steel plate, black, paint
Dimensions	$\phi 180 \times 5$ (exposed section) + 100 (D) mm (7.09" x 0.2" + 3.94")
Weight	1 kg (2.2 lb)
Accessory	Rubber grommet...2, Paper pattern....1



ZS-1860F-AS



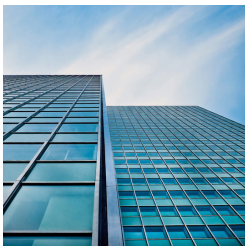
ZS-1860-AS



ZS-2360-AS

Specifications

Model	ZS-1860-AS	ZS-2360-AS
Rated Noise Power	6 W (100 V Line), 3 W (70 V Line)	
Rated Impedance	100V line: 1.7kΩ(6W), 3.3kΩ (3W), 6.7kΩ (1.5W), 13kΩ (0.8W) 70V line: 1.7 kΩ(3W), 3.3kΩ (1.5W), 6.7kΩ (0.8W), 13kΩ (0.4W)	
Sensitivity	94dB (1W, 1 m) (330Hz -3.3kHz, pink noise)	
Frequency Response	55Hz - 20kHz (pink noise -20dB)	45 Hz - 20 kHz (pink noise -20 dB)
Speaker Component	12cm (5") cone-type	16 cm (6") cone-type
Dimensions for Fixing Hole	Mounting hole: $\phi 150 \pm 3\text{mm}$ (5.91" \pm 0.12") Ceiling thickness: 5 - 25mm (0.2" - 0.98")	Mounting hole: $\phi 200 \pm 3\text{mm}$ (7.87" \pm 0.12") Ceiling thickness: 5 - 25 mm (0.2" - 0.98")
Speaker Mounting Method	Suspension spring	
Applicable Cable	Solid wire: 0.5 - 3mm ² (AWG20 - 12)	
Connection	Push wire connection (Bridging terminal 2 - branch type)	
Finish	Frame: Steel plate, white (RAL 9016 equivalent), paint Grille: Steel net, white (RAL 9016 equivalent), paint	
Dimensions	$\phi 180 \times 5$ (exposed section) + 65(D)mm ($\phi 7.09" \times 0.19" + 2.56"$)	$\phi 200 \times 5$ (exposed section) + 71(D)mm ($\phi 7.87" \times 0.19" + 2.80"$)
Weight	590g (1.3 lb)	900 g (1.98 lb)



Office Buildings



Schools



Train Stations



Hospitals

