

## DESCRIPTION

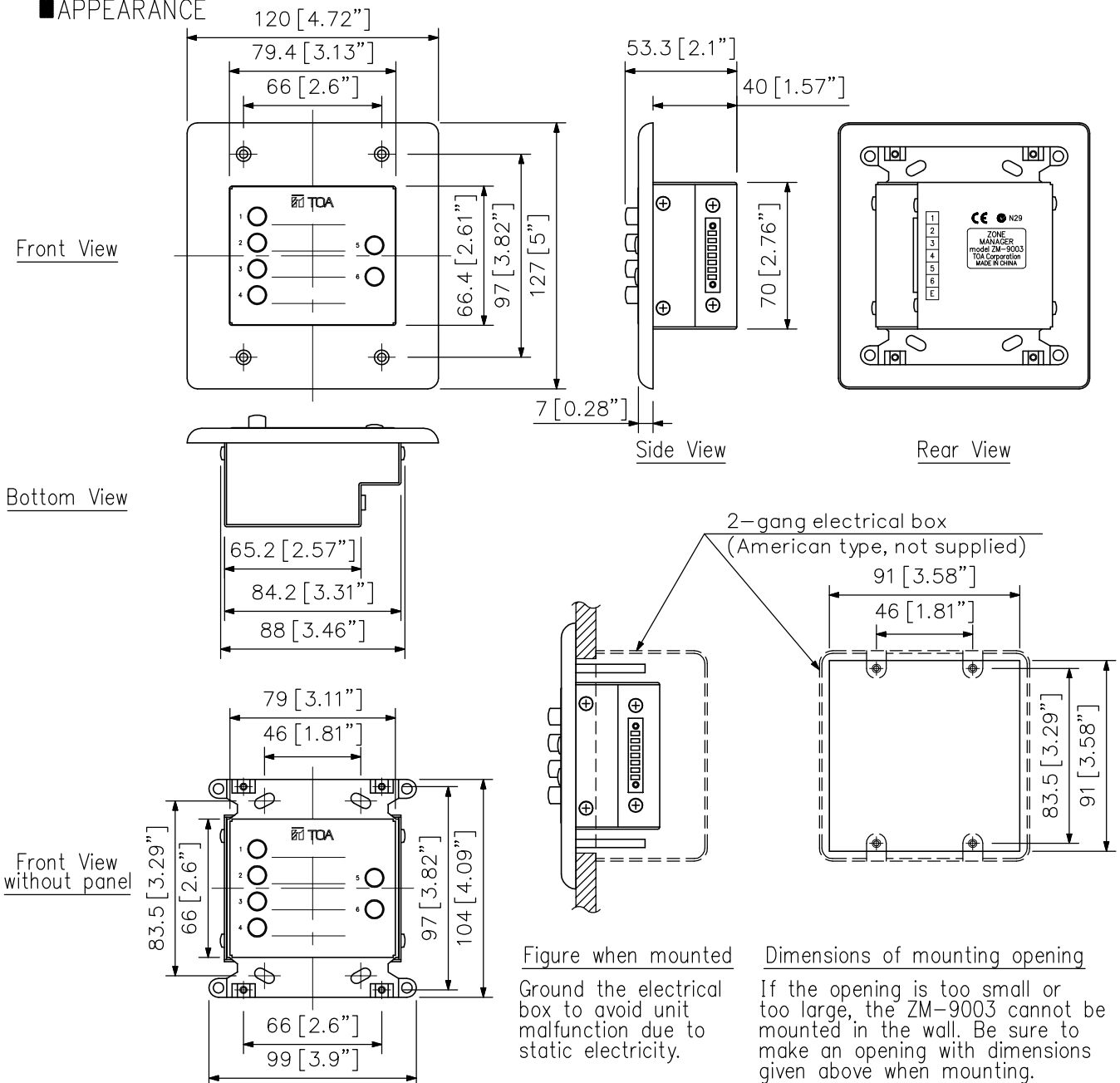
The ZM-9003 is a remote control switch panel with 4 interlocking selection switches and 2 momentary switches. Connecting it to the 9000 series amplifier's control input terminal permits various controls such as BGM source selection and the sound volume adjustment. It can be mounted in an American standard 2-gang electrical box in the wall.

## SPECIFICATIONS

Line Resistance	250 Ω or less (per line)
Terminal	Removable terminal block (7 pins)
Operating Temperature	-10°C to +40°C (14°F to 104°F)
Finish	Surface-treated steel plate, white, paint
Dimensions	120 (W) × 127 (H) × 53.3 (D) mm (4.72" × 5" × 2.1")
Weight	375 g (0.83 lb)
Accessory	Box mounting screw (No.6-32UNC × 30) ...4, Box mounting screw (M4 × 30) ...4, Panel mounting screw ...2, Removable terminal plug (7 pins) ...1

Note: If controls of more than 4 channels are needed, then additional C-001T Control I/O Expansion Module is required to expand control inputs. Since no electrical box is supplied with the unit, prepare it separately.

## APPEARANCE



UNIT: mm SCALE: 1/3